

# HMC Cotton Wool Weighing System 1004 - Packaging -

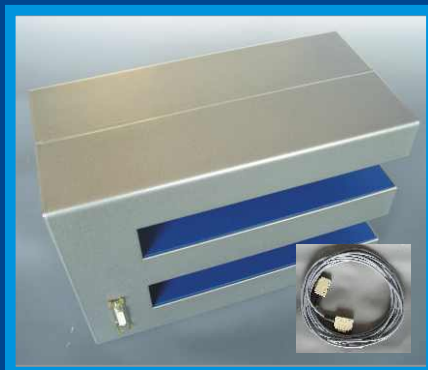
## Packaging Weight Evaluation and Control

- cotton wool web quantities evaluated before getting packaged
- high accuracy and reliability due to over 30 years of practical operation
- weight adjustment during operation by remote control or balances
- web hanging through, sag regulation
- independent of line speed due to use of tachometer function
- directly to connect to the machine logic control unit

## Online Operation



## Components



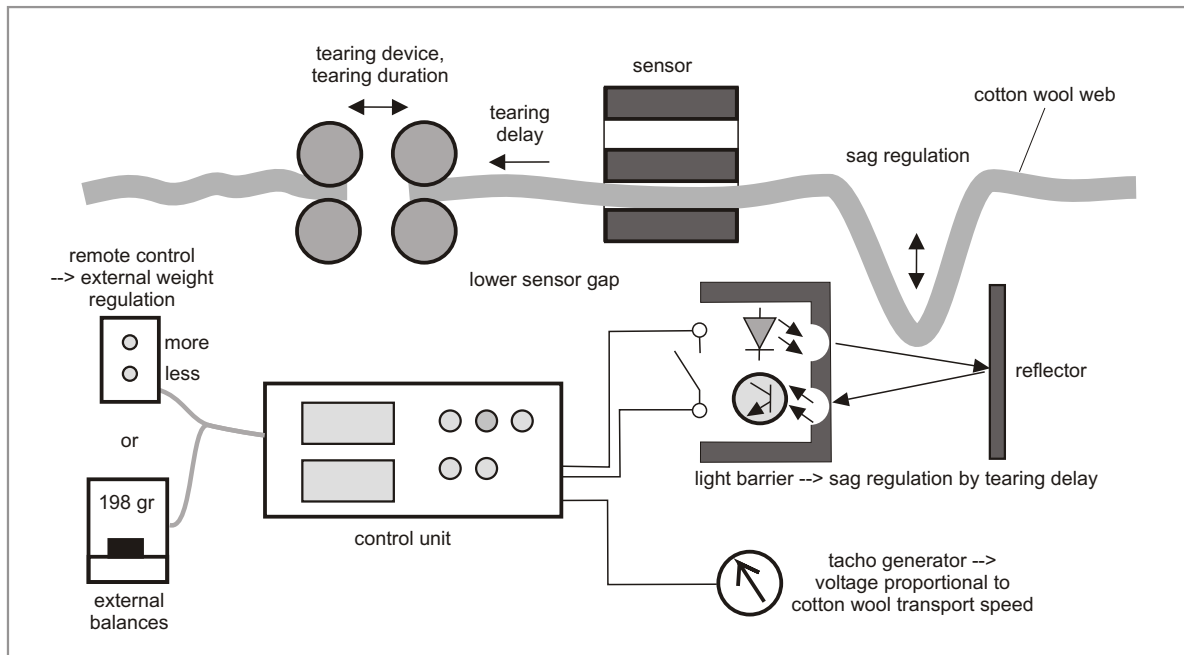
Sensor

## Remote Control



Control Unit

## Operation Principle



## Technical Data

measuring principle : harmless, maintenance free, capacitive sensor technique

products : cotton wool,  
in other versions : cellulose, acrylic fibres, foam, textiles,  
non-wovens, pastes, glue and other non-metallic materials

line speed : all speeds occurring during normal cotton wool production

evaluation : real time, last evaluation is valid

accuracy : <1 % typical of 200gr cotton wool using on-line weight correction

displays : a) bar graph - indicator for showing weighing process  
b) 31/2 -digit LED indicator for weight/meter (relative value) and for weight correction value  
c) LED indicator for tearing-process and tearing-delay-time

set value : input by 4 digit wheel switch

adjustment : a) zeroing  
b) tearing time  
c) tearing delay time  
d) hanging through, sag regulation

power supply : +24VDC +-10%, 200mA, stabilized

switching output : PNP, opto-coupler for Activating the tearing device  
high level : +18V...+26V / 20mA  
low level : rest current <0,5mA

signal inputs : opto-coupler  
high level : +16V...+28V  
low level : 0...+5V

for functions :  
- reset dosing process  
- halt dosing process  
- hanging through, sag regulation  
- weight adjustment by remote control or external balances  
- reset weight adjustment value

control input : speed regulation by tachometer voltage  
0...+5V...+10V, +5V corresponds to normal speed

operation temp. range : 15...35 °C

storage temp. range : 0...50 °C

warming up time : 1 hour

dimension : control unit : 175 x 320 x 340 mm  
(HxDxW) sensor : 210 x 150 x 300 mm  
sensor gap : 40 x 150 x 240 mm

weight : control unit : 6 kg incl. remote control  
sensor unit : 7 kg, incl. sensor cable

CE

## Order Data

sensor version	order no.
<b>HMC Cotton Wool Weighing System 1004</b>	HMC-CWWS 1004
consisting of 1 pc. Control Unit 1 pc. Sensor, incl. Sensor Cable 1 pc. Remote Control	