



2RHIB

Introduction

Hollow through shaft encoder
 Std. IP-65
 Thermal shut down at 155°C
 Strong compact electronics
 Based on 2 precision ball bearings,
 for harsh industrial environments

MECHANICAL SPECIFICATIONS

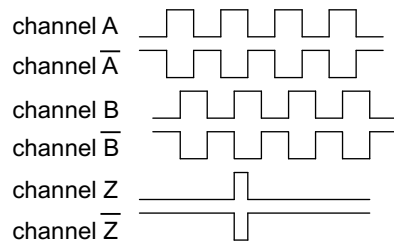
Weight	About 190g (ex cable)
Material	Housing - Aluminum Shaft - Brass Bearings - Lifetime lubricated ball bearings
H.Shaft Loads	axial maximum = 50 N radial maximum = 50 N
Max. rev.	3,000 rev./min.
IP-rating	Standard IP 65
Start Torque	< 0,02 Nm at 25° C
Mass Moment of Inertia	6 gcm ²
Shock	maximum 100G / 11 ms
Bump	10G - 16 ms (1000 × 3 axis)
Vibration	(10-2000Hz)/ 10G

ELECTRICAL SPECIFICATIONS

Output Waveform	Incremental (A, B, Z and inverted)
Output Signals	Standard, Inverted, Differential (RS-422A compatible @ 5V)
Current No Load	Max.45 mA
Max. load pr. output	30 mA - (Short circuit protected)*
Supply-Voltage(Vin)	Min 4,5V to Max. 30V* , Reverse polarity protection
V _{out} low	maximum 500 mV @ I = 10 mA
V _{out} high	minimum (Vin -0.6) @ I = -10 mA minimum (Vin -1.3) @ I = -25 mA
Operating Temp.	- 40°C to +85°C
Storage Temp.	- 40°C to +85°C

OUTPUT WAVEFORM

↻ CW Seen from open hollow shaft end



PULSES PER REVOLUTION

1	25	80	300	1000	3600
2	30	90	360	1024	4000
5	32	100	400*	1131	4096
6	36	125	455	1250	5000
8	40	150	500	1500	9000
10	50	180	600	2000	10000
15	60	200	635*	2048	
16	64	250	720*	2500	
20	75	256	800*	3000	

* = Delivery without 0-puls only

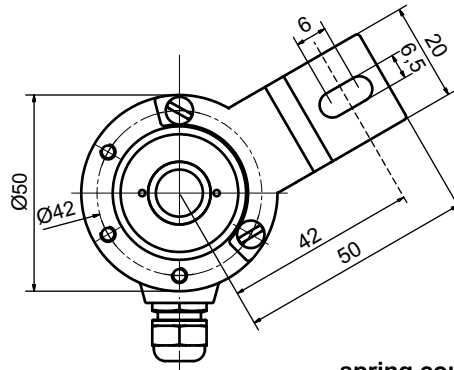
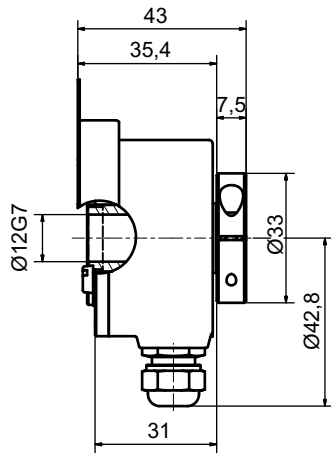
CONNECTIONS

Color code	Standard
Pink	Ch. A
Grey*	Ch. A Gnd
Green	Ch. B
Yellow*	Ch. B Gnd
White	Ch. Z
Brown*	Ch. Z Gnd
Red	Vcc
Blue*	0-Volt

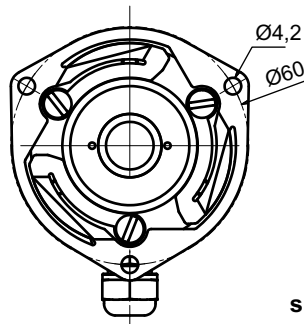
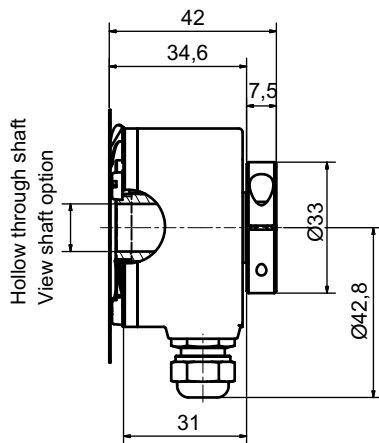
*Blue, grey, yellow and brown are internal connected

Color code	Differential
Pink	Ch. A
Grey	Ch. A inv
Green	Ch. B
Yellow	Ch. B inv
White	Ch. Z
Brown	Ch. Z inv
Red	Vcc
Blue	0-Volt

MECHANICAL DIMENSIONS



spring coup. 1 pnt.

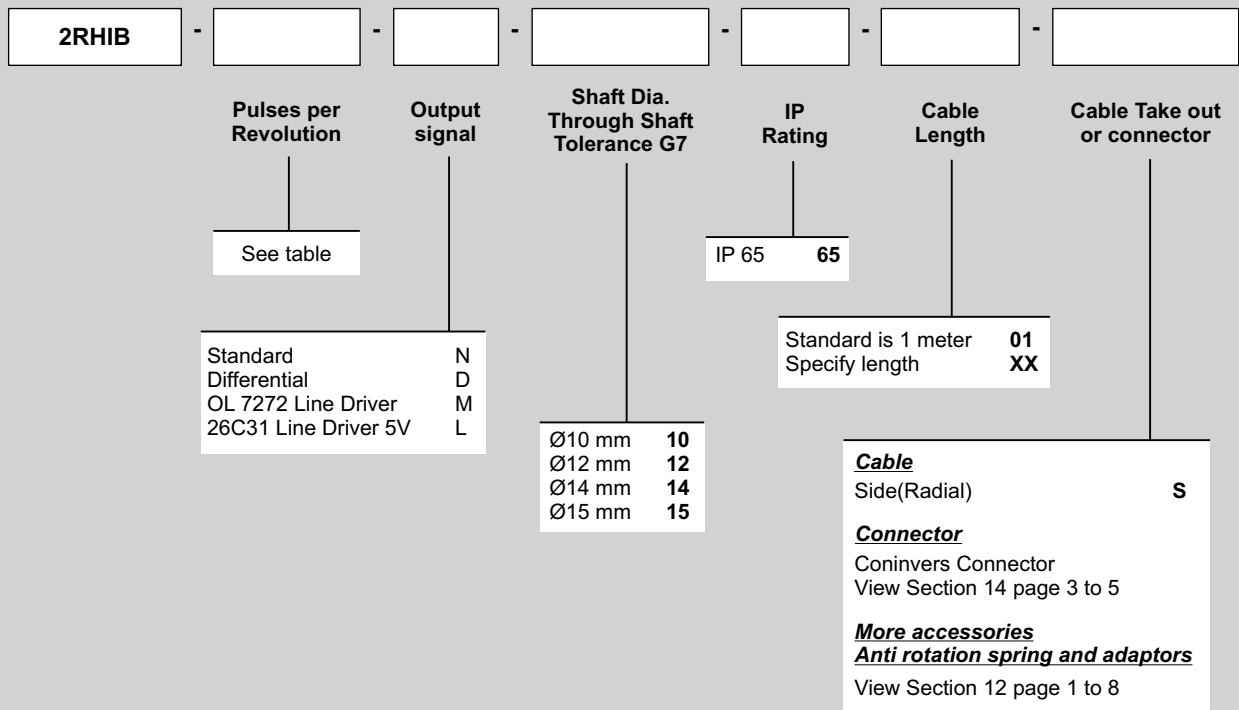


spring coup. 3 pnt.

ORDERING CODES

Example: 2RHIB — 1024 — N — 12 — 65 — 01 — S

Type



WARRANTY

Scancon A/S warrants against manufacturing defects for a period of 12 months from the date of manufacture. Product dimensions, weights and all product illustrations are approximate and may be modified without prior notice.

This warranty does not cover problems or consequences due to common usage (wear and tear) for which the product was designed. Nor does it cover product failures caused by improper installation or use, overloading, incorrect maintenance, or operation outside the product's specifications.

Detailed warranty information can be found in Scancon's Terms & Conditions