

Banking Screw Adapter

SBSA



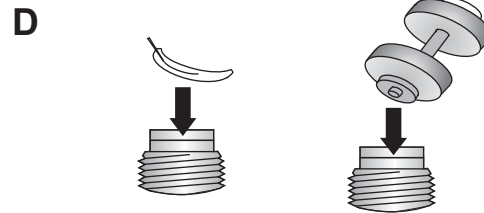
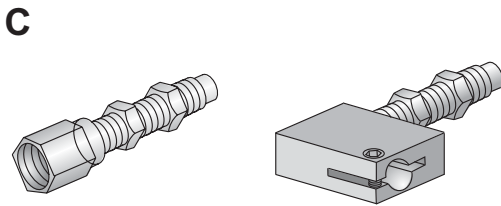
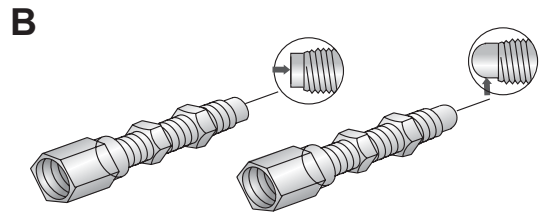
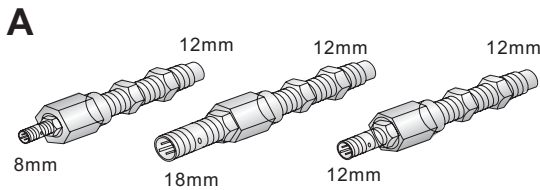
Features

- Heat-treated alloy steel construction
- Mix & match with different sensors
- Optional ball-end piston & spring rates
- Three diameters and many barrel lengths

Benefits

- Stop travel and sense with one device
- Versatile outputs using ang shielded sensor
- Isolates sensor from impact damage
- New applications for proximity sensors

Options (A thru D)



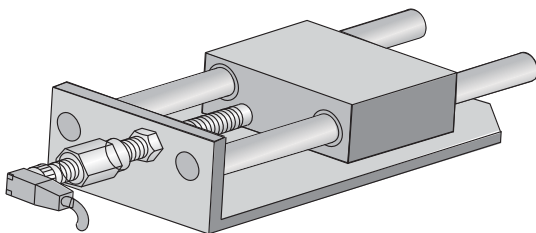
BANKING SCREW ADAPTER

Head-treated Stop Screws



Typical Application

Shown at right, a BSA is used as a reliable and rugged stop for a linear slide unit. Accurate and easy adjustments to the end of stroke position are possible, and any shielded proximity sensor can be used.



BSA Construction & Operation

