

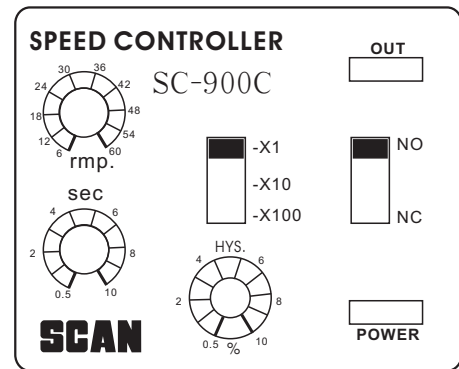
# SPEED CONTROLLER/SC-900C



## Feature

The speed control SC-900C contains a transformer, a DC stabilizer, an electronic evaluator and an output relay. It is a complete electronic unit, suitable for connection to the sensors, including inductive and capacitive proximity switch. The input signals (>0.5ms) pass through a level-regulator to a frequency-cross-over before going to differentiating unit. If the speed is too high, then the relay closes and the green LED lights up and vice versa. Flutter from the rotating devices, can be compensated by altering the hysteresis, using the potentiometer mounted on the front. The unit requires a warming up time of 10 seconds for the motor, but this can be varied from 0.5 to 10 seconds by an internal potentiometer.

## Panel face



## Technical Data

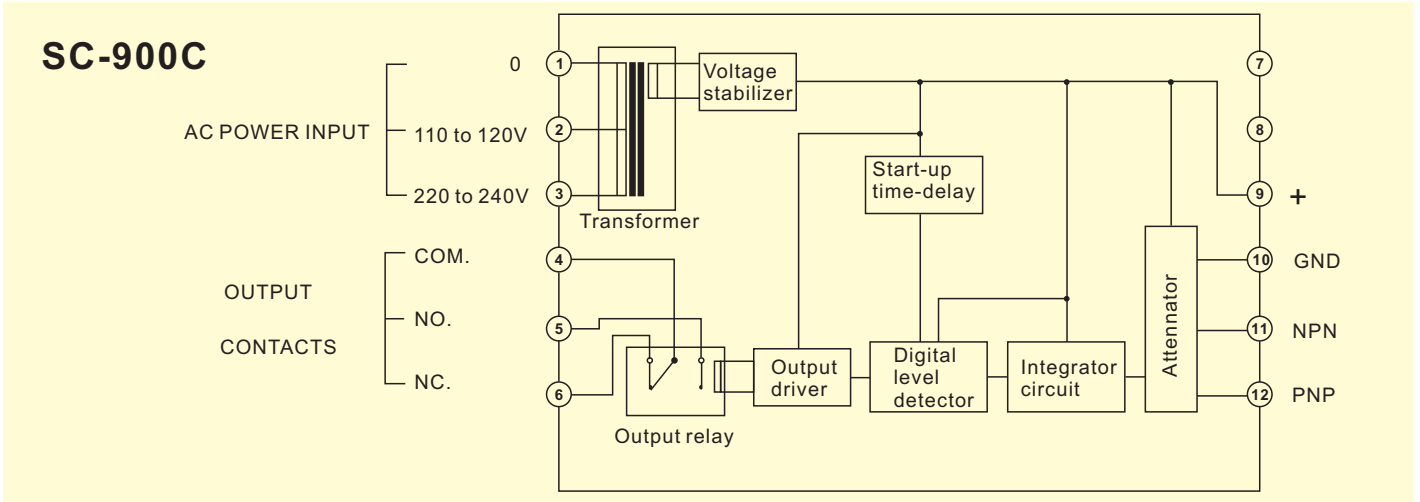
Items	Model	SC-900C
Supply voltage		110V/220V±10%, 50/60 HZ
power consumption		less than 8 VA
Input		PNP or NPN
Hysteresis		0.5% to 10% via potentiometer adjustable
Start-up delay		0.5 to 10 sec. via potentiometer adjustable
Speed range		3 ranges can be selected 6-60 rpm, 60-600rpm, 600-6000rpm
Output		Relay contact SPDT 3A resistive at 250 VAC
Ambient temperature/humidity		0°C to 60°C
Insulating resistance		More than 10 MΩ (500VDC, insulation resistance tester) between AC(input) and DC(output) terminals
Dielectric resistance		1500 VAC, 50/60HZ for 1 minute between AC(inout)and DC(output) terminals
Net weight		Approx. 430 g
Accessories		Socket with terminals. Fixing clamps

## Function Instruction and Adjustment

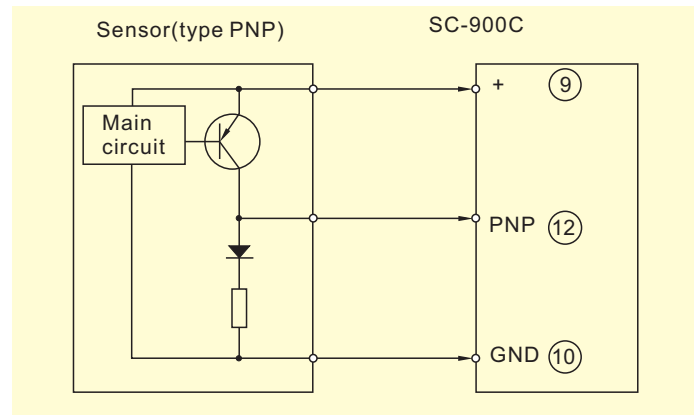
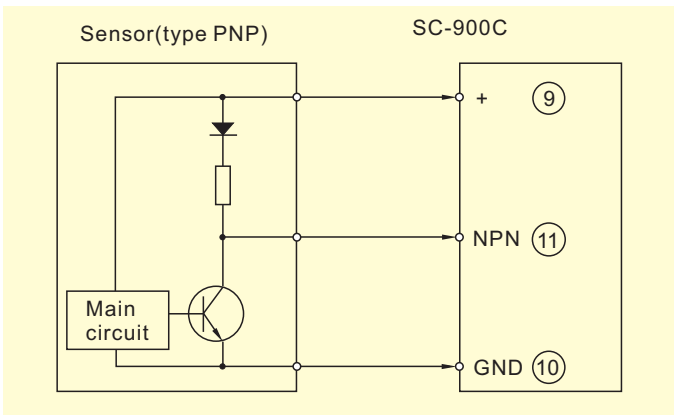
Front Diagram	Condition	Function Instruction and Adjustment
	The position of the slide switch depend upon the requirement	NO: normally open NC: normally closed
		Hysteresis indicates the percent of difference between speed increasing values and speed decreasing values. Suitable for controlling speed of devices with moment of inertia.
	The slide switch is set, the Hys. Potentiometer is regulated.	-X1: speed range from 6-60 rpm. -X10: speed range from 60-600rpm. -X100: speed range from 600-6000 rpm.
		Turn the potentiometer to the speed values required
		The start-up time delay inhibits the function of speed controller during system start-up. Only after the preset start-up time period has elapsed, does speed controller become operative.
		The green LED indicates the status of output.
		The red LED indicates power on.

# SPEED CONTROLLER/SC-900C

## Functional Diagram



## Connection instruction

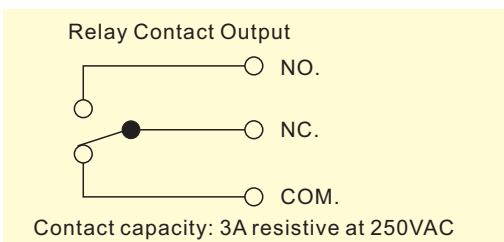


## Wiring Guidelines

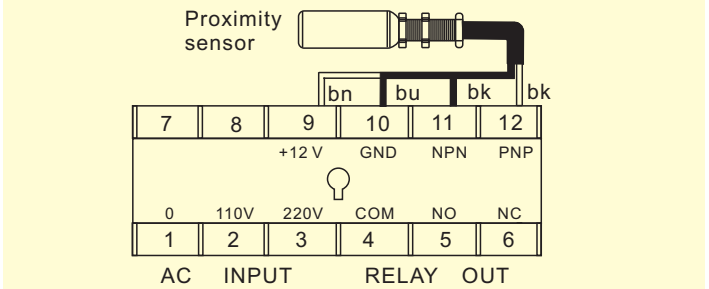
Distance between proximity switches (inductive and capacitive) and this control unit is 3000 ft (max.). If the electrical parameters of the cable are unknown, the values below may be used. Based on a survey of manufacture s data.

Capacitance: 60 PF/ft. Inductance: 0.20uH/ft.

## OUTPUT CIRCUIT

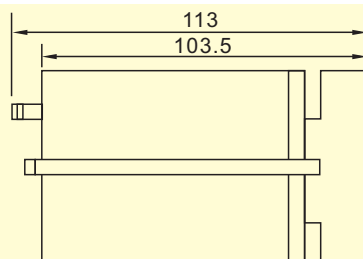
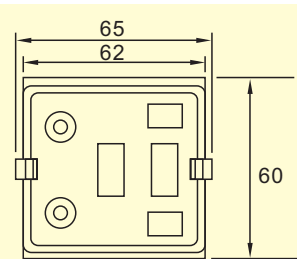


## Wiring



## Dimensions

● Control unit



● Socket with terminals

